

For Immediate Release

First Moonen 124 Under Construction

Largest-ever Moonen yacht to sail away in spring 2009



's-Hertogenbosch, The Netherlands: Moonen Shipyards has reached a new plateau in its quarter-century of building fine “pocket-size superyachts.” The shipyard is building its longest and largest-displacement yacht, the first 37.80-metre Moonen 124.

In August 2006 the shipyard contracted with a repeat client, who was attracted to René van der Velden’s shaping of the Moonen 120, which was at the time the largest design proposed for a newly developed “Displacement Series.” (The series now includes the Moonen 72, 84, 96, and 97.) As the client’s ideas evolved, van der Velden and Moonen had an opportunity to modify and modernize the exterior styling as appropriate to the larger hull. The naval architecture by Stolk Marimecs, the general arrangement, engineering, and outfitting were similarly modified to accommodate the greater size.

The 124 will be the first Moonen yacht with a central atrium with spiral staircase serving three interior decks and the flying bridge. Her general arrangement features a main-deck master suite forward that includes a “veranda.” Belowdecks, two double and two twin guest staterooms centre on the stairs, with crew quarters forward of a privacy-assuring bulkhead. As with many current Moonen yachts, the 124 will have an exciting, innovative interior by the team at Art-Line. It will feature what Art-Line calls “fusion” styling that combines Western cherry wood panelling ”spiced” by Eastern details including woven bamboo, leather, wooden floors, tropical shutters, and lots of loose lounging furniture. The wheelhouse plan is based on ergonomic efficiency.

The Moonen 124 steel hull is being custom-built by a Dutch specialist; the aluminium superstructure is being fabricated at Moonen. The yacht will be powered by twin MTU 16V 2000 M60 diesels. She is being built to class under Lloyd’s Register of Shipping survey and will be fully MCA compliant. Delivery is planned for spring 2009.

Besides the 124, a new Fast Range “99 Alu” is also on order. (All “Alu” yachts are being built in light, strong, corrosion-resistant Sealium.) Further Moonen also has on order its first two 97s, adaptations of the Moonen 96 with naval architecture by Diana Yacht Design.

For detailed information on the Moonen 124 or any Moonen models, please contact:

Moonen Shipyards bv, The Netherlands

Phone: +31 (0) 73 621 00 94 - Fax: +31 (0) 73 621 94 60

Email: info@moonen.com – Website: www.moonen.com

Communication: Heleen van Hout, heleen.vanhout@moonen.com

Sales: Gelein Melis, gelein.melis@moonen.com



Building Number 189: Moonen 124

GENERAL

Dimensions:

Length over all	ca. 37.80 m
Length on waterline	ca. 34.35 m
Beam moulded	ca. 8.40 m
Beam maximum	ca. 8.60 m
Draught max.	ca. 2.30 m

Ship type:

Hull	Round bilge displacement hull
Stern	Transom stern with bathing platform
Keel	Duct keel
Tanks hull	Double-bottom tanks integrated into the hull

Construction:

Material of hull plating	Steel Grade A.
Material of superstructure	Aluminium AlMg4,5Mn / AlMgSi1

Tank Capacities:

Fuel	ca. 45.500 ltrs
Fresh water	ca. 8.000 ltrs
Waste water	ca. 4600 ltrs

Performance:

With twin MTU engines 16V 2000 M60, 800 bkW at 1800 rpm	
Max. speed	ca. 13.0 Kn at 50% load.
Continuous speed	ca. 11.0 Kn at 50% load and 85% rpm.
Range at economical speed	ca. 5.600 Nm at 8 Kn.

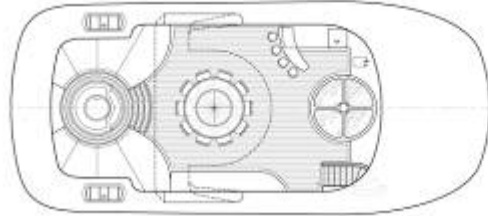
Design: René van der Velden

Interior design: Art-Line

Naval architecture: Stolk Marimecs



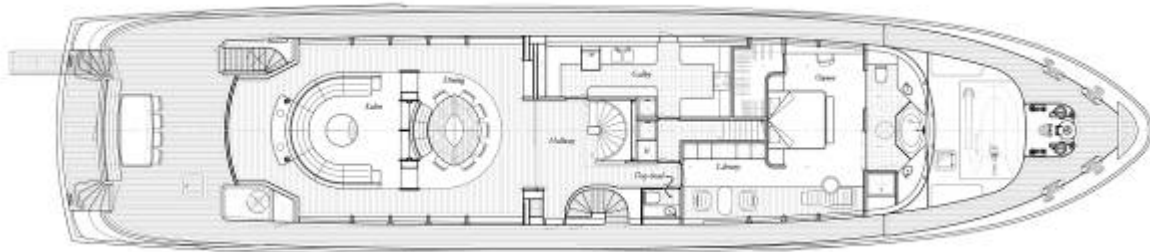
Building Number 189: Moonen 124



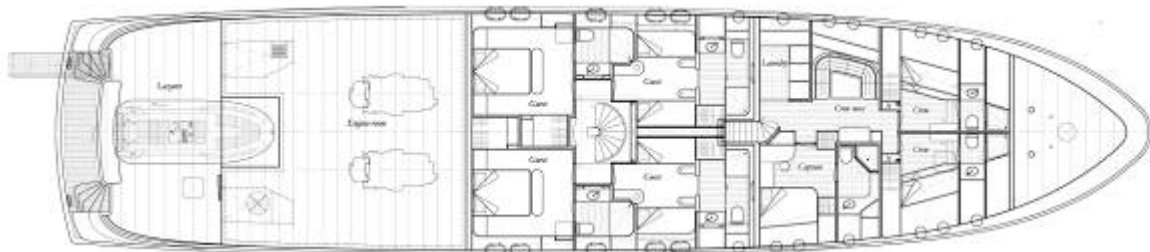
Sun deck



Upper deck



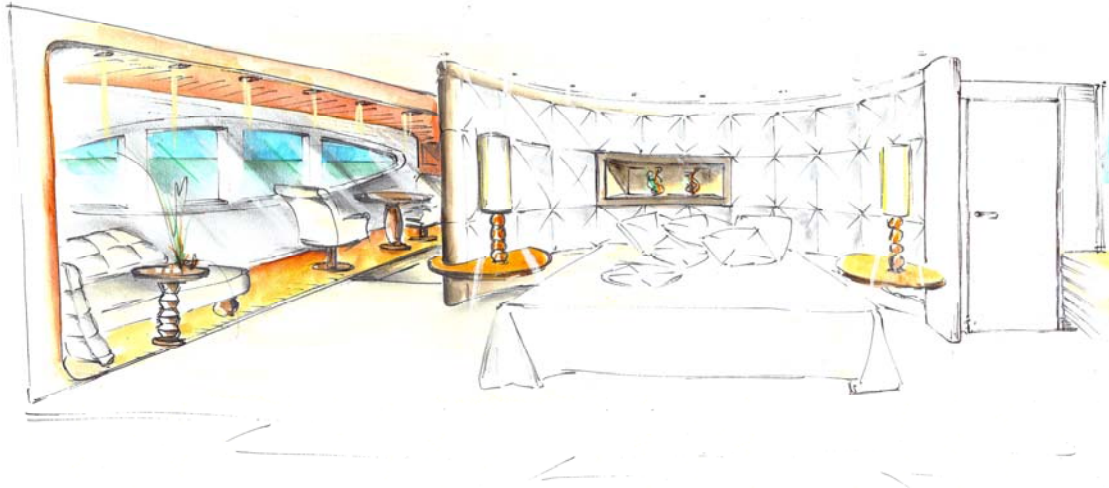
Main deck



Lower deck



Building Number 189: Moonen 124



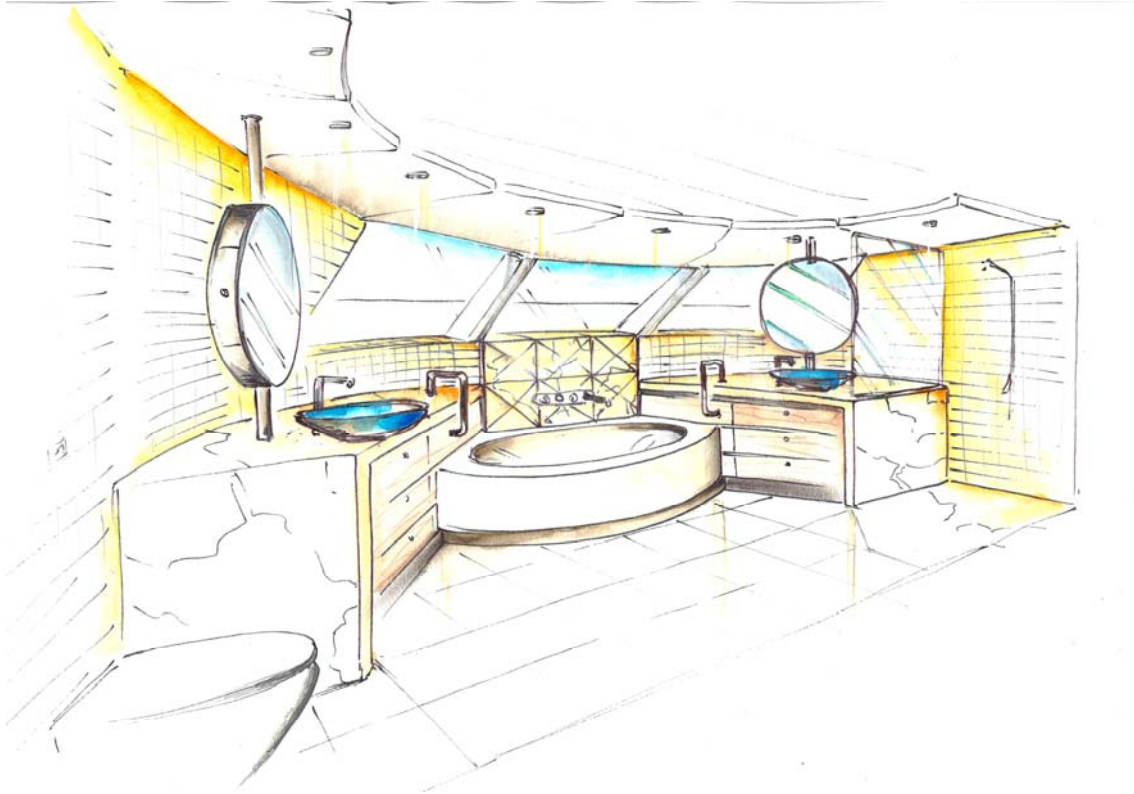
Owners suite



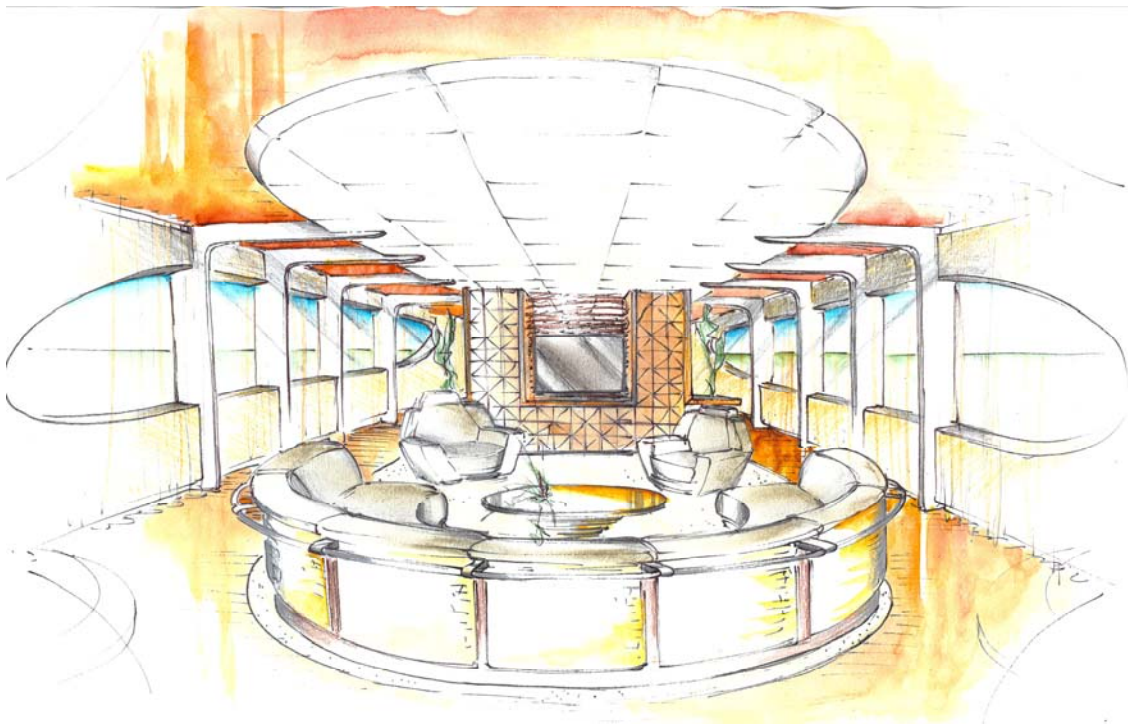
Lobby lower deck



Building Number 189: Moonen 124



Owners bathroom



Salon main deck